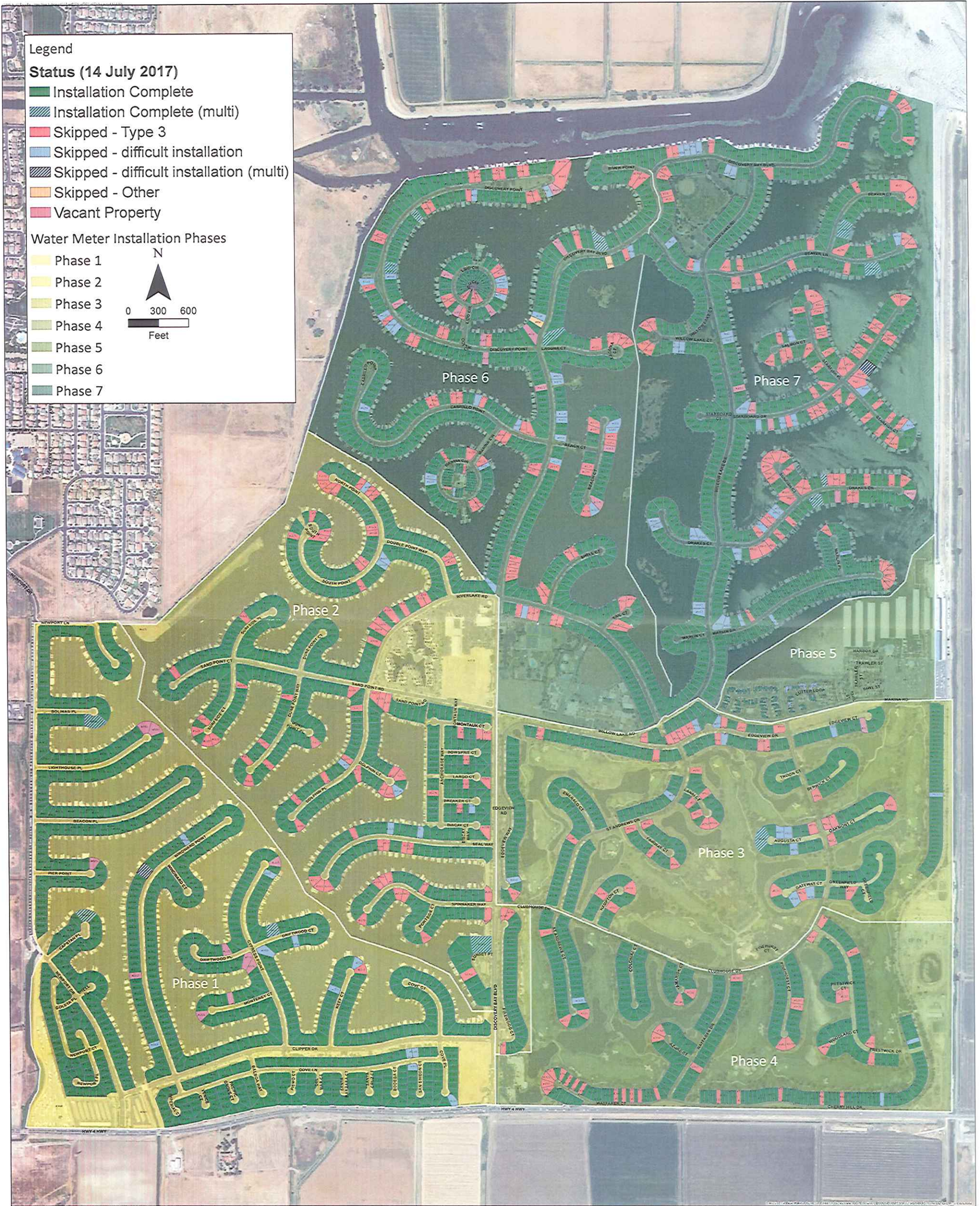


Meter Project Summary

	PP6 5/22/17 to 6/20/17	PP7 6/21/17 to 7/14/17	Total January to 7/14/17
Installation Complete	556	419	2940
Meter Type			
1	71	49	293
2	474	365	2440
3	11	5	155
NA	0	0	52
Skipped - Type 3	94	80	361
Skipped - difficult installation	27	32	95
Skipped - Other	2	0	2
Vacant Property	12	3	28



Legend

Status (14 July 2017)

- Installation Complete
- Installation Complete (multi)
- Skipped - Type 3
- Skipped - difficult installation
- Skipped - difficult installation (multi)
- Skipped - Other
- Vacant Property

Water Meter Installation Phases

- Phase 1
- Phase 2
- Phase 3
- Phase 4
- Phase 5
- Phase 6
- Phase 7

N

0 300 600
Feet